

# KAYDEE

SHADING SOLUTIONS



## SHADA 700 RANGE

Full Cassette Blinds with  
light exclusion options



*"Full enclosure of the mechanism has the benefit presenting a finished appearance from both inside and outside the building."*

## Shada 700® and 700 LE® Full Cassette with light exclusion options

### Shada 700

The Shada 700 extends the Shada range of roller blinds by enclosing the mechanism in a full cassette.

### Shada 700 LE

The Shada 700 LE extends the range further by offering light exclusion options comprising of side channels and bottom bar both fully equipped with integral light including brush strips.

**The Shada 700 range is available with chain, crank and electric operation depending on size and the fabric being used.**

## Benefits

### Shada 700

#### • Robust and fully proven

With the fabric safely contained within the head box when not in use, the whole system is robustly engineered and fully proven in demanding education and commercial environments and requires minimum maintenance.

#### • Colour co-ordinated

The aluminium head box and optional side channels, have a powder-coated finish in white or black as standard. They are also available in a range of alternative colours to match décor.

The fabric range, Dimout, Screen and Blackout, are also available in a range of colourways to meet design requirements.

#### • Chain, crank or electric control

Select from metal or nylon chain, a fixed or detachable manual crank control system, or an advanced integral electrical tubular motor – giving raise or lower at the flick of a switch.

### Easily installed

The system can be installed without difficulty in both new build and retro-fit contracts. Head boxes can be located either inside or outside window openings and side channels are designed for both side and face fix.

### Shada 700 LE

#### • Kaydee Shada 700 LE blinds

additionally provide a very high level of room darkening.

In combination with side channels and bottom bars, both equipped with light excluding brush strips and your choice of blackout fabric the 700 LE is ideal to provide the best solution for any teaching, training or other work that needs an effectively darkened work environment.

*"Full enclosure of the mechanism has the benefit presenting a finished appearance from both inside and outside the building."*

## Shada 700 & 700 LE® Specification Guides

### SPECIFICATION

#### Head box

Roller blind to be carried on an aluminium roller-tube (32-58 mm) contained within an aluminium head box.

#### Head box sizes

63-130mm rounded profile. All sizes dependent on method of operation.

#### Side channels

Robust matching aluminium side rails, (size to suit head box) complete with light-sealing brushes for LE models.

#### Bottom rail

Aluminium bottom rail and compressible light seal brush on LE models

#### Finish (insert as applicable)

Head box and side channels to be finished in matching colour - RAL white 9010, black or grey (please specify) as standard. Also available in natural aluminium. Special RAL colours are available to order.

#### Fabric

Black-out fabric Standard fabric is high-specification PVC-coated woven polyester available in a standard range of colours. Other fabrics, including a range of PVC-coated glass fibre fabrics, are available: Details available from Kaydee Blinds.

#### Fire resistance

Standard and glass fibre fabrics are manufactured to flame retardant standard BS5438, 1976, method 2 and BS5867, part 2 1980, type B.

#### Fabric retention

Specify if fabric grip feature is required.

#### Sizes

See Selector chart overleaf and specify:

Width \_\_\_\_\_

Height \_\_\_\_\_

Drop \_\_\_\_\_

#### Control Options (insert as applicable)

**Manual:** plastic or metal bead chain or fixed or detachable manual crank rod and gearbox.

**Electric:** to be by integral electric tubular 240v ac motor

Specify \_\_\_\_\_

#### Warranty

3-year 'fit-for-use' warranty supplied by:

Kaydee Blinds  
Jubilee House  
Gelders Hall Road  
Shepshed  
Leicestershire  
LE12 9NH

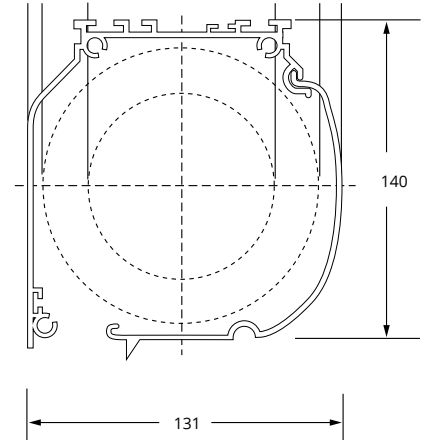
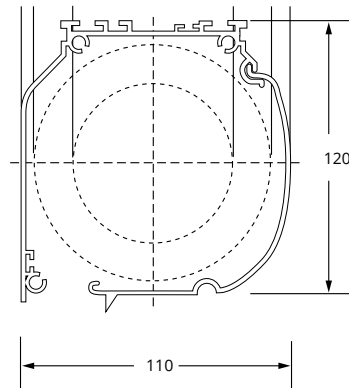
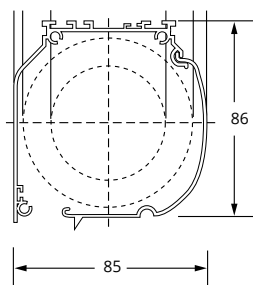
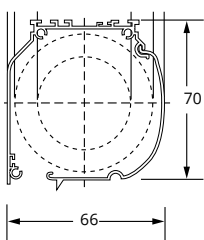


## Shada 700 LE® Technical Data

All images are for illustrative purposes only and are not to scale.

Kaydee has a policy of continuous improvement and reserves the right to update any specification without notice.

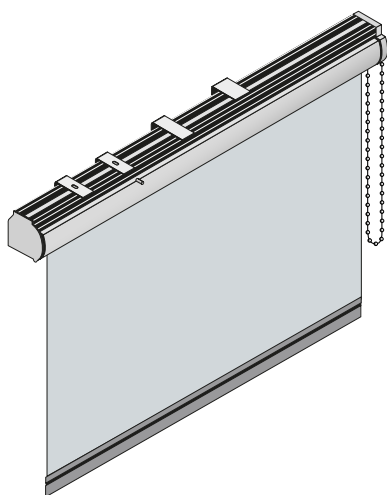
| Kaydee Model        | Min width | Max Width | Max height fabric.75 | Max height fabric .4 | Tube size mm |    |    |    |    |    |    | Cassette size |    |     |     |
|---------------------|-----------|-----------|----------------------|----------------------|--------------|----|----|----|----|----|----|---------------|----|-----|-----|
|                     |           |           |                      |                      | 32           | 38 | 40 | 45 | 50 | 78 | 85 | 63            | 83 | 110 | 130 |
| Shada 700/700 LE CH | 800       | 2100      | 1400                 | 2200                 | ●            |    |    |    |    |    |    | ●             |    |     |     |
| Shada 700/700 LE CH | 800       | 2800      | 2300                 | 2600                 |              |    |    | ●  |    |    |    |               | ●  |     |     |
| Shada 700/700 LE CR | 800       | 2100      | 1400                 | 2300                 | ●            |    |    |    |    |    |    | ●             |    |     |     |
| Shada 700/700 LE CR | 800       | 2800      | 2300                 | 2600                 |              |    |    | ●  |    |    |    |               | ●  |     |     |
| Shada 700/700 LE CR | 1000      | 4000      | 3200                 | 3600                 |              |    |    |    |    | ●  |    |               |    | ●   |     |
| Shada 700/700 LE CR | 2000      | 4500      | 3200                 | 4000                 |              |    |    |    |    |    | ●  |               |    |     | ●   |
| Shada 700/700 LE E  | 800       | 2100      | 1400                 | 2300                 |              |    | ●  |    |    |    |    | ●             |    |     |     |
| Shada 700/700 LE E  | 800       | 2800      | 2300                 | 2600                 |              |    |    |    | ●  |    |    |               | ●  |     |     |
| Shada 700/700 LE E  | 1000      | 4000      | 3200                 | 3200                 |              |    |    |    |    | ●  |    |               |    | ●   |     |
| Shada 700/700 LE E  | 2000      | 4500      | 3200                 | 3200                 |              |    |    |    |    |    | ●  |               |    |     | ●   |



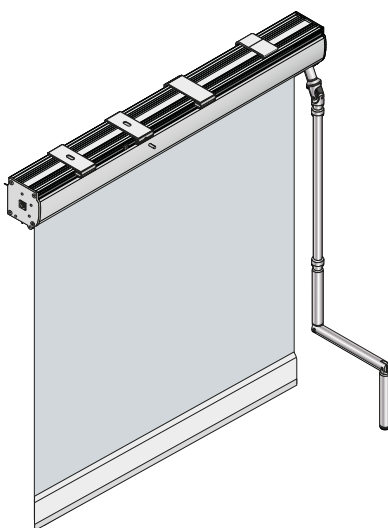
Blind boxes to accommodate the blinds will necessarily vary in size to accommodate access required for fitting and maintenance. Please check with our technical department.

## Shada 700® Parts

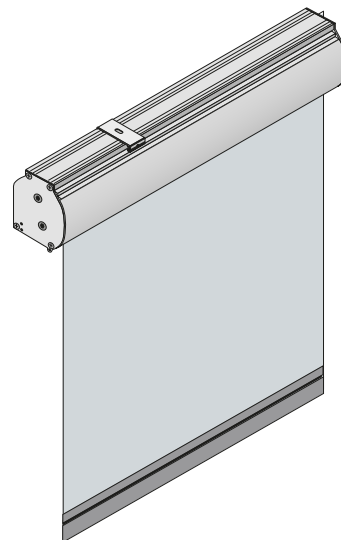
Chain



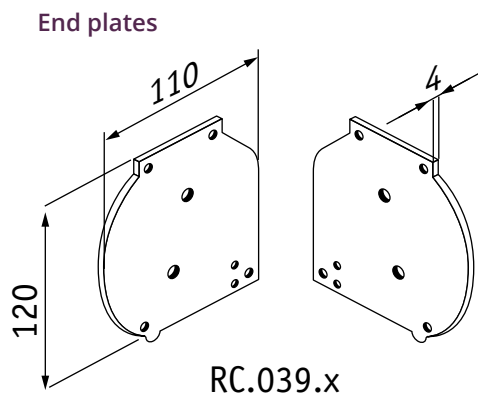
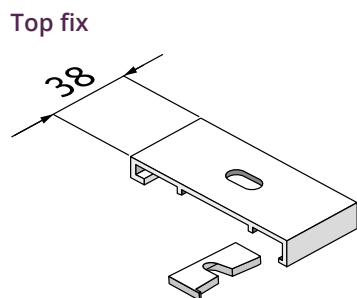
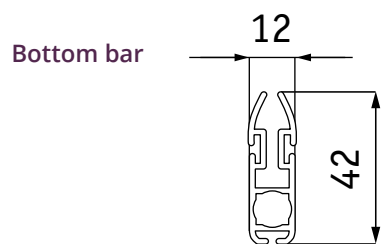
Crank



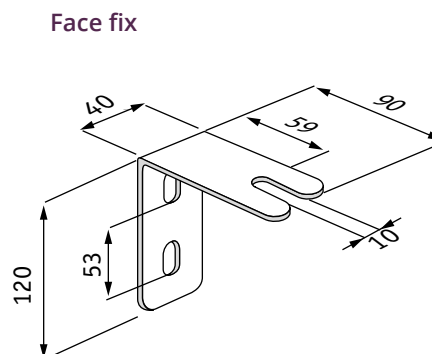
Electric



## Fixing details

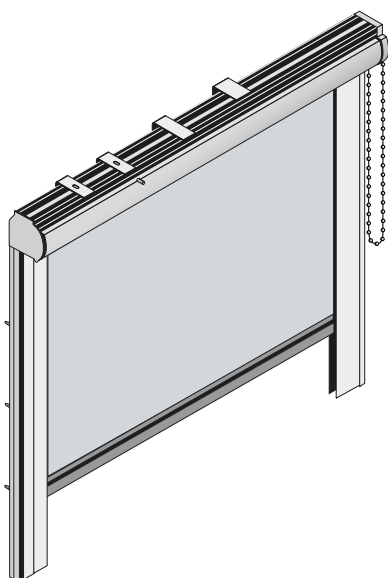


RC.039.x

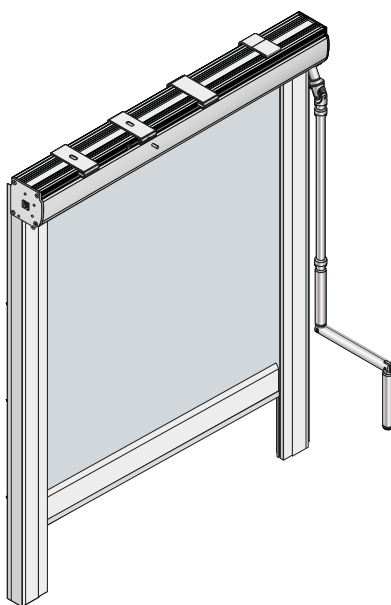


## Shada 700 LE® Parts

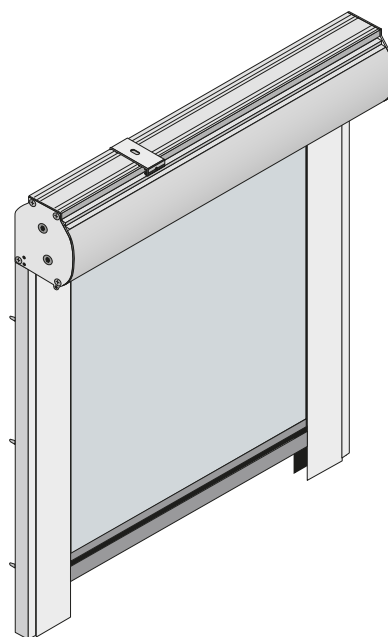
Chain



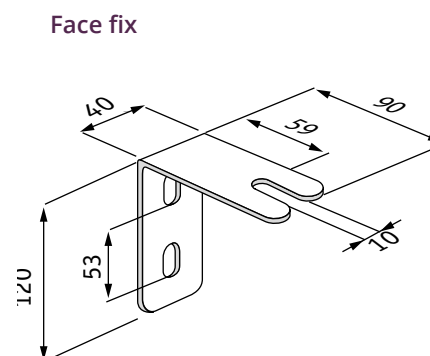
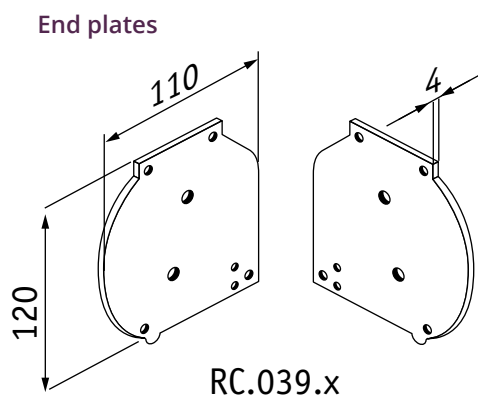
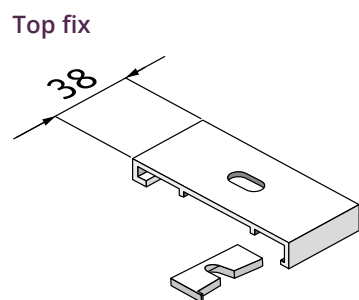
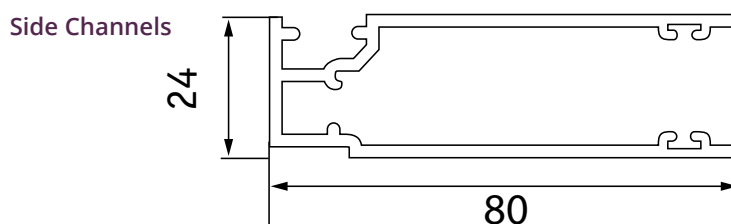
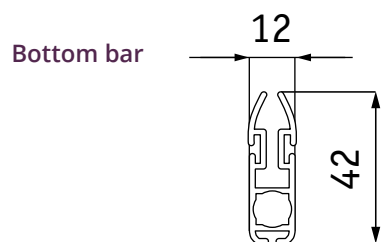
Crank



Electric



## Fixing details





## The strength behind the name

Consider the value you get from sourcing your commercial blinds from Kaydee. We have built our reputation on decades of specialisation in your market. So, quite simply, you get excellence as standard.

### Competitive prices

The best prices combined with vast choice are just two reasons why Kaydee brings you the best solution – within your budget. Guaranteed.

### We are answerable

Unlike distributors, Kaydee supports your project from specification to installation. Add good communications to answerability and you get just the solution that you need.

### On time every time

Our commitment to you is that we meet our contractual deadlines. On time, every time. Isn't that good for your peace of mind?

### Total control

From start to finish, Kaydee will nurture your project with pride and professionalism. Our project management skills give you total confidence.

### Excellent guarantees

For no extra cost, our commercial blinds come with up to a 10 year fit-for-use warranty. We back our quality: that's your guarantee.

### Experience counts

There is no substitute for Kaydee experience – twenty-five years' innovation, exclusivity and customer care. For you, that means no surprises – you get exactly what you asked for.

### Safe too

Safe installation, safe operation. Kaydee staff are experts in health and safety. Their training and experience helps reduce your risks.

### Easy on the eye

Cosmetically or architecturally – blinds have to look right. Kaydee's vision in colour, texture and style will make the right visual statement for you.







# KAYDEE

## SHADING SOLUTIONS

Jubilee House  
Gelders Hall Road  
Shepshed  
Loughborough  
Leicestershire  
LE12 9NH

T: 01332 851400  
email: [enquiries@kaydeeb blinds.com](mailto:enquiries@kaydeeb blinds.com)  
[www.kaydeeb blinds.com](http://www.kaydeeb blinds.com)